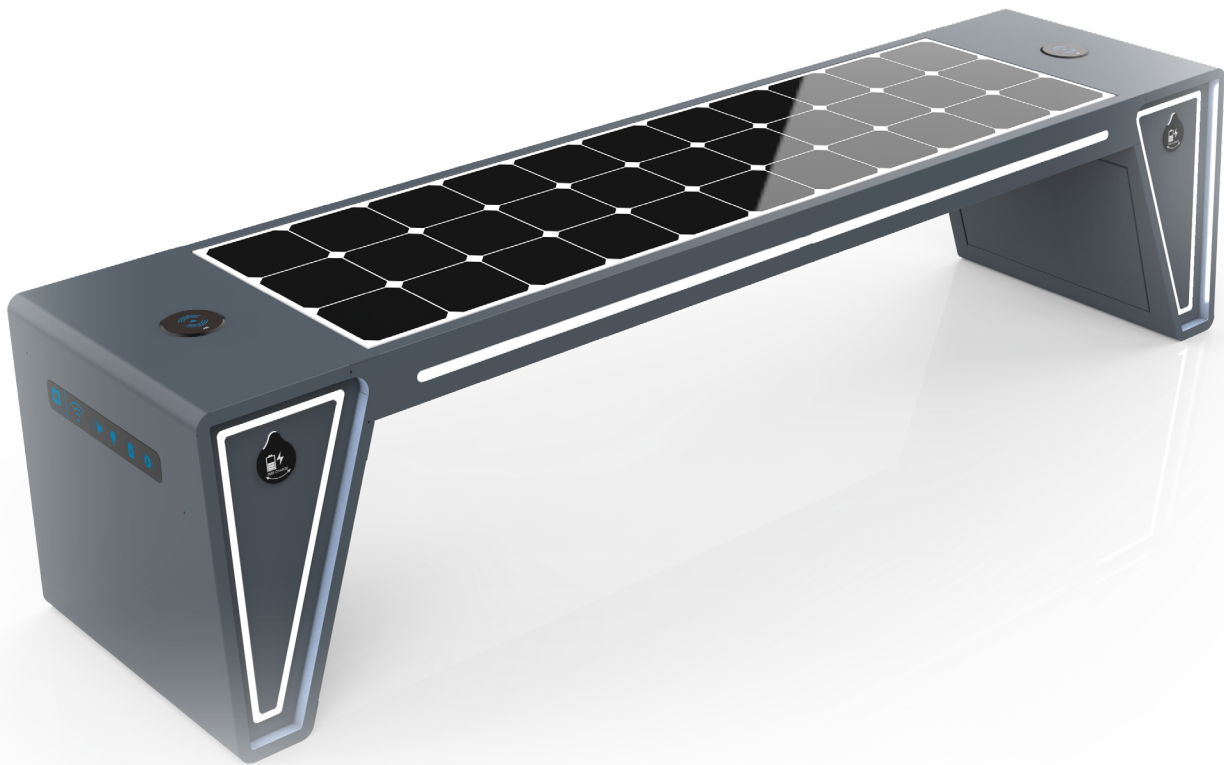


solar blade bench

WYC1817

Cutting edge design backed up with the very latest solar technology and engineered to the highest quality. Additional features include customised LED lighting in framework of bench.



specifications

Material	Stainless steel frame
Finish	Powder Coated RAL 7012 Basalt Grey
Dimensions	L 191cm w 48cm H 45cm
Solar Panel	105W
Battery	12v 55Ah
Features	<ul style="list-style-type: none">• 2no USB ports• 2no wireless charging• LED lighting - warm white• Bluetooth speaker 5/12v• Wi-fi 4G international router• Cooling fans/temperature seat control option
Controller	MPPT
Weight	80kg

7.0

