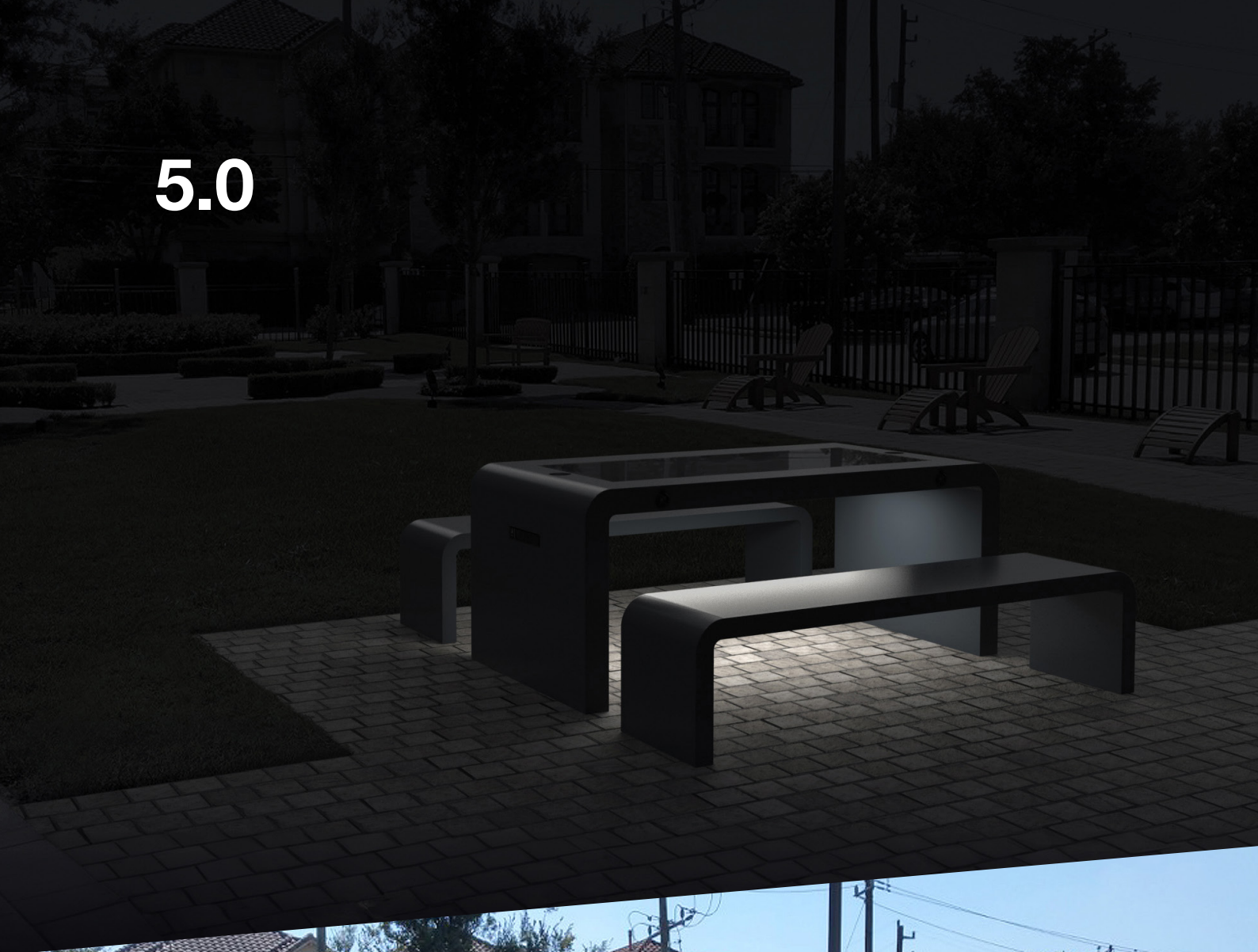


5.0

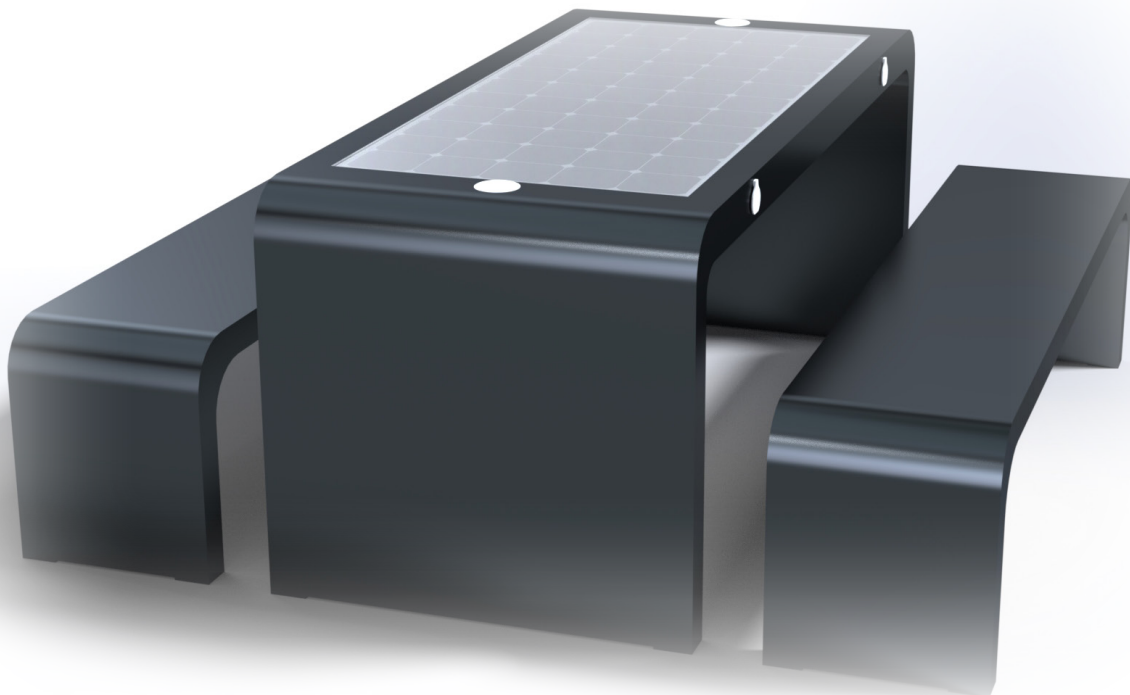


# solar municipal picnic table

WYC1908B solar smart table and two benches

**Brand new to market, the Municipal Smart Bench offers the very latest cutting edge technology backed up by superb engineering and fabrication.**

Produced in stainless steel and powder coated to any RAL colour, the Municipal offers picnic tables as well as benches and standard features include USB and wireless charging, 4G international router, Bluetooth speaker and discreet LED lighting.



## specifications

<b>Material</b>	Stainless steel frame
<b>Finish</b>	Powder Coated RAL 7012 Basalt Grey
<b>Dimensions</b>	<b>Bench:</b> L 204cm w 45cm H 40cm <b>Table:</b> L 204cm w 80cm H 80cm
<b>Solar Panel</b>	135W
<b>Battery</b>	12v 55Ah
<b>Features</b>	<ul style="list-style-type: none"><li>• 4no USB ports</li><li>• 2no wireless charging</li><li>• LED lighting - warm white</li><li>• Bluetooth speaker 5/12v</li><li>• Wi-fi 4G international router</li><li>• Cooling fans/temperature seat control</li></ul>
<b>Controller</b>	MPPT
<b>Weight</b>	120kg