

thesolarrange

intelligent solar lighting.

JANUARY 2023

contact



sales@solar-range.com
01392 247577

exeter office

Queensgate House,
48 Queen Street,
Exeter, Devon, EX4 3SR

london office

124 - 128 City Road,
London, EC1V 2NX

1	1.1	solar classic bench WITH ARMREST
	1.2	solar classic bench WITH BACKREST & ARMREST
2	2.1	solar sylva bench
	2.2	solar sylva bench WITH BACKREST
3	3.1	solar sylva picnic table
	3.2	solar sylva picnic table WITH BACKREST
4		solar municipal bench
5		solar municipal picnic table
6	6.1	Municipal bench WITH NO SOLAR TECHNOLOGY
	6.2	Sylva bench WITH NO SOLAR TECHNOLOGY
7		solar blade bench
8	7.1	solar post 100
	7.2	solar post 200
	7.3	solar post 300
9		solar eye
10		solar boom
11		solar case
12		solar shelter
13		solar canopy
14		solar wall mars

contact



sales@solar-range.com
01392 247577

exeter office

Queensgate House,
48 Queen Street,
Exeter, Devon, EX4 3SR

london office

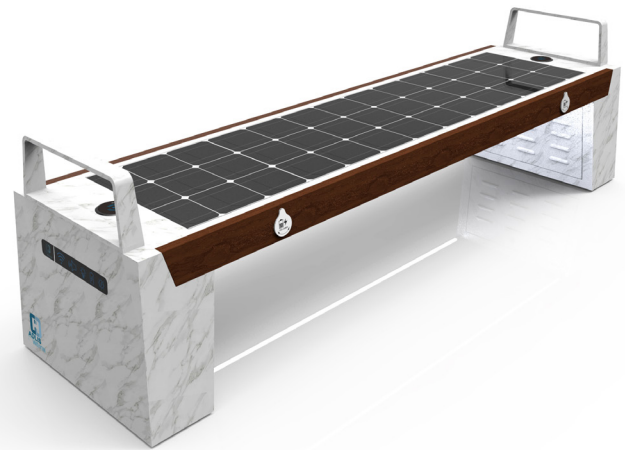
Kemp House,
160 City Road, London,
EC1V 2NX

solar **classic bench.**

Brand new to the market the classic Solar Smart WIFI Bench offers the very latest cutting edge technology backed up by superb engineering and fabrication.

Produced in stainless steel and powder coated to any RAL colour. Standard features include USB and wireless charging, 4G international router, Bluetooth speaker and discreet LED lighting.

Please contact us for availability, pricing and any custom requirements for this product



Specifications

WYC1809

Solar Bench with Armrest

- **Material** Stainless steel frame with composite wood panels
- **Finish** Powder Coated RAL 7012 Basalt Grey
- **Dimensions** L 195cm w 48cm H 42cm
- **Solar Panel** 90W
- **Battery** 12v 55Ah
- **Features**
 - 2no USB ports
 - 2no wireless charging
 - LED lighting - warm white
 - Bluetooth speaker 5/12v
 - Wi-fi 4G international router
 - Cooling fans/temperature seat control

solar classic bench.

With additional armrest and backrest

Brand new to the market the classic Solar Smart WIFI Bench offers the very latest cutting edge technology backed up by superb engineering and fabrication.

Produced in stainless steel and powder coated to any RAL colour. Standard features include USB and wireless charging, 4G international router, Bluetooth speaker and discreet LED lighting.

Please contact us for availability, pricing and any custom requirements for this product



Specifications

WYC1809B

Solar Bench with Armrest and Backrest

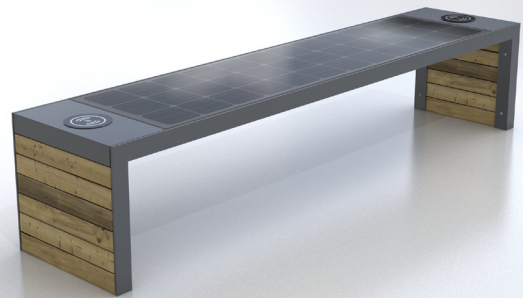
- **Material** Stainless steel frame with composite wood panels
- **Finish** Powder Coated RAL 7012 Basalt Grey
- **Dimensions** L 195cm w 48cm H 42cm
- **Solar Panel** 90W
- **Battery** 12v 55Ah
- **Features**
 - 2no USB ports
 - 2no wireless charging
 - LED lighting - warm white
 - Bluetooth speaker 5/12v
 - Wi-fi 4G international router
 - Cooling fans/temperature seat control

solar **sylva bench.**

Brand new to market, the SYLVA Smart Bench offers the very latest cutting edge technology backed up by superb engineering and fabrication.

Produced in stainless steel and powder coated to any RAL colour. Standard features include USB and wireless charging, 4G international router, Bluetooth speaker and discreet LED lighting

Please contact us for availability, pricing and any custom requirements for this product



Specifications

WYC1909B

Solar Bench

- **Material** Stainless steel frame with composite wood panels
- **Finish** Powder Coated RAL 7012 Basalt Grey
- **Dimensions** L 195cm w 48cm H 42cm
- **Solar Panel** 90W
- **Battery** 12v 55Ah
- **Features**
 - 2no USB ports
 - 2no wireless charging
 - LED lighting - warm white
 - Bluetooth speaker 5/12v
 - Wi-fi 4G international router
 - Cooling fans/temperature seat control

solar **sylva bench.**

With additional backrest

Brand new to market, the SYLVA Smart Bench offers the very latest cutting edge technology backed up by superb engineering and fabrication.

Produced in stainless steel and powder coated to any RAL colour. Standard features include USB and wireless charging, 4G international router, Bluetooth speaker and discreet LED lighting

Please contact us for availability, pricing and any custom requirements for this product



Specifications

WYC1909C

Solar Bench with back rest

- **Material** Stainless steel frame with composite wood panels
- **Finish** Powder Coated RAL 7012 Basalt Grey
- **Dimensions** L 195cm w 48cm H 42cm
- **Solar Panel** 90W
- **Battery** 12v 55Ah
- **Features**
 - 2no USB ports
 - 2no wireless charging
 - LED lighting - warm white
 - Bluetooth speaker 5/12v
 - Wi-fi 4G international router
 - Cooling fans/temperature seat control

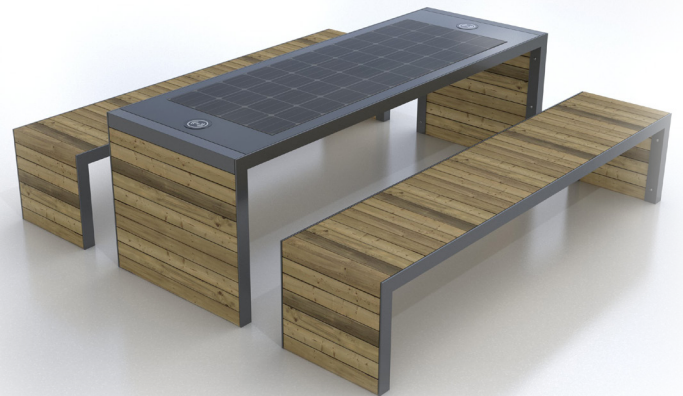
solar **sylva** picnic table.

Solar Smart Table and 2 Benches

Brand new to market, the SYLVA Smart Bench offers the very latest cutting edge technology backed up by superb engineering and fabrication.

Produced in stainless steel and powder coated to any RAL colour, the Sylva offers picnic tables as well as benches and standard features include USB and wireless charging, 4G international router, Bluetooth speaker and discreet LED lighting

Please contact us for availability, pricing and any custom requirements for this product



Specifications

WYC1909A

Solar Smart Table and 2 Benches

- **Material** Stainless steel frame with composite wood panels
- **Finish** Powder Coated RAL 7012 Basalt Grey
- **Dimensions** **Bench:** L 195cm w 48cm H 42cm
Table: L 204cm w 80cm H 80cm
- **Solar Panel** 90W
- **Battery** 12v 55Ah
- **Features**
 - 2no USB ports
 - 2no wireless charging
 - LED lighting - warm white
 - Bluetooth speaker 5/12v
 - Wi-fi 4G international router
 - Cooling fans/temperature seat control

solar **sylva picnic table.**

Smart Table with One Bench with Backrest and One Bench Without

Brand new to market, the SYLVA Smart Bench offers the very latest cutting edge technology backed up by superb engineering and fabrication.

Produced in stainless steel and powder coated to any RAL colour, the Sylva offers picnic tables as well as benches and standard features include USB and wireless charging, 4G international router, Bluetooth speaker and discreet LED lighting

Please contact us for availability, pricing and any custom requirements for this product



Specifications

WYC1909

Smart Table with One Bench with Backrest and One Bench Without

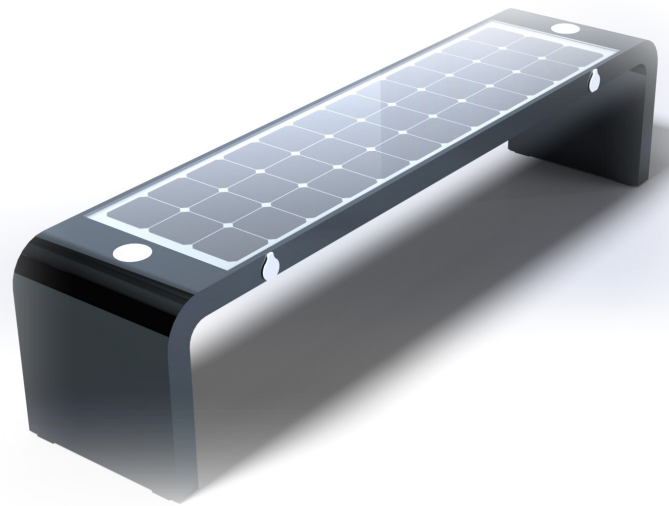
- **Material** Stainless steel frame with composite wood panels
- **Finish** Powder Coated RAL 7012 Basalt Grey
- **Dimensions** **Bench:** L 195cm w 48cm H 42cm
Table: L 204cm w 80cm H 80cm
- **Solar Panel** 90W
- **Battery** 12v 55Ah
- **Features**
 - 2no USB ports
 - 2no wireless charging
 - LED lighting - warm white
 - Bluetooth speaker 5/12v
 - Wi-fi 4G international router
 - Cooling fans/temperature seat control

solar municipal bench.

Brand new to market, the Municipal Smart Bench offers the very latest cutting edge technology backed up by superb engineering and fabrication.

Produced in stainless steel and powder coated to any RAL colour, the Municipal offers picnic tables as well as benches and standard features include USB and wireless charging, 4G international router, Bluetooth speaker and discreet LED lighting

Please contact us for availability, pricing and any custom requirements for this product



Specifications

WYC1908D

Solar Smart Bench

- **Material** Stainless steel frame with composite wood panels
- **Finish** Powder Coated RAL 7012 Basalt Grey
- **Dimensions** L 195cm w 48cm H 42cm
- **Solar Panel** 90W
- **Battery** 12v 55Ah
- **Features**
 - 2no USB ports
 - 2no wireless charging
 - LED lighting - warm white
 - Bluetooth speaker 5/12v
 - Wi-fi 4G international router
 - Cooling fans/temperature seat control

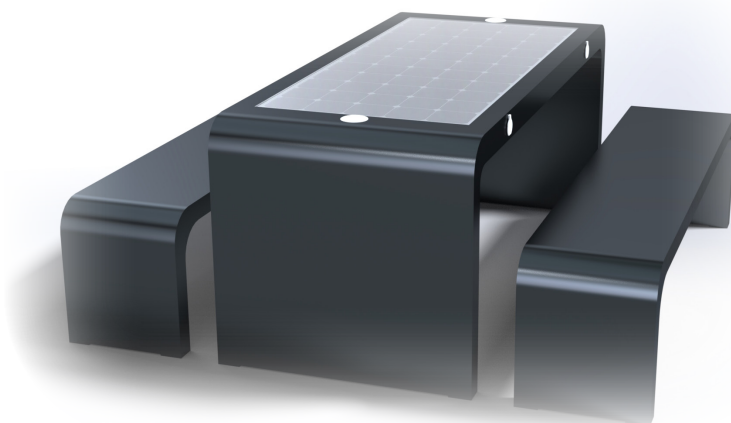
solar municipal picnic table.

Solar Smart Table and Two Benches

Brand new to market, the Municipal Smart Bench offers the very latest cutting edge technology backed up by superb engineering and fabrication.

Produced in stainless steel and powder coated to any RAL colour, the Municipal offers picnic tables as well as benches and standard features include USB and wireless charging, 4G international router, Bluetooth speaker and discreet LED lighting

Please contact us for availability, pricing and any custom requirements for this product



Specifications

WYC1908B

Solar Smart Table and Two Benches

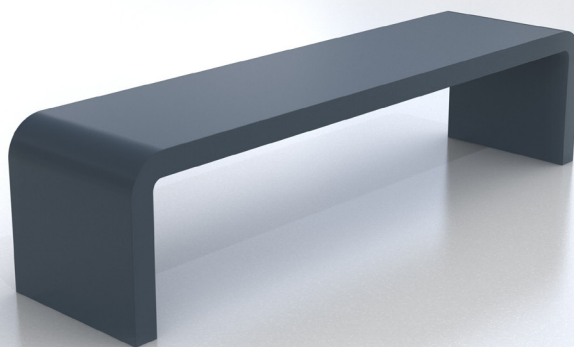
- **Material** Stainless steel frame with composite wood panels
- **Finish** Powder Coated RAL 7012 Basalt Grey
- **Dimensions** **Bench:** L 195cm w 48cm H 42cm
Table: L 204cm w 80cm H 80cm
- **Solar Panel** 90W
- **Battery** 12v 55Ah
- **Features**
 - 2no USB ports
 - 2no wireless charging
 - LED lighting - warm white
 - Bluetooth speaker 5/12v
 - Wi-fi 4G international router
 - Cooling fans/temperature seat control

municipal bench.

Municipal bench no solar technology

Brand new to market, the Municipal Smart Mix up your benches with a combination of solar smart benches and non solar using the same design.

Please contact us for availability, pricing and any custom requirements for this product



Specifications

WYC1908G

Municipal bench no solar technology

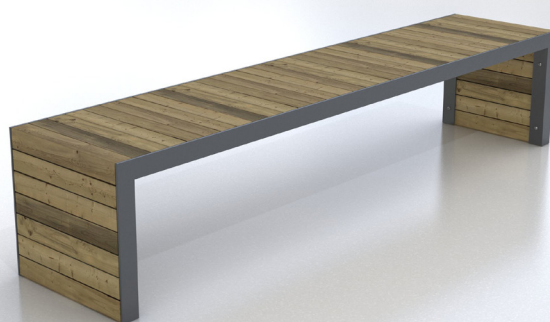
- **Material** Stainless steel
- **Finish** RAL 7012 basalt grey
- **Dimensions** L204cm x W45cm x H40cm

sylva bench.

Sylva bench no solar technology

Brand new to market, the Sylva Smart Mix up your benches with a combination of solar smart benches and non solar using the same design.

Please contact us for availability, pricing and any custom requirements for this product



Specifications

WYC1909G

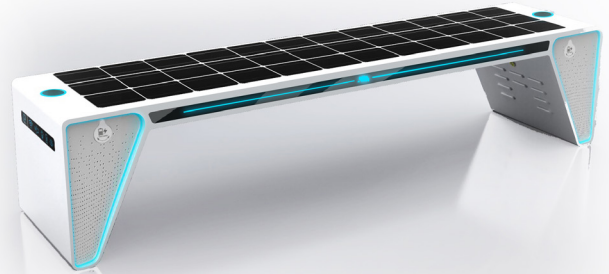
Sylva bench no solar technology

- **Material** Stainless steel with composite wood panels
- **Finish** RAL 7012 basalt grey
- **Dimensions** L204cm x W45cm x H40cm

solar blade bench.

Cutting edge design backed up with the very latest solar technology and engineered to the highest quality. Additional features include customised LED lighting in framework of bench.

Please contact us for availability, pricing and any custom requirements for this product



Specifications

WYC1817

- **Material** Stainless steel frame with composite wood panels
- **Finish** Powder Coated RAL 7012 Basalt Grey
- **Dimensions** L 195cm w 48cm H 42cm
- **Solar Panel** 90W
- **Battery** 12v 55Ah
- **Features**
 - 2no USB ports
 - 2no wireless charging
 - LED lighting - warm white
 - Bluetooth speaker 5/12v
 - Wi-fi 4G international router
 - Cooling fans/temperature seat control

solar post 100.

The solar post 100 is a 1metre high solar powered post designed for both commercial and residential use, offering the very latest cutting edge solar technology backed up with the highest quality engineering

the solar posts are ideal for parks, roads, campuses, drives, paths, housing developments and public spaces. Produced in stainless steel and powder coated the PV panels on 3 sides have enough PV wattage for the product to operate in any climate. Using a remote control on site the solar post can be set to different light levels and timings of 4 6 or 8 hrs enabling the post to operate at different settings depending on the season.

Please contact us for availability, pricing and any custom requirements for this product



Specifications

WYL1802

- **Dimensions** L 15cm W 15cm H 100cm
- **Material** Stainless Steel
- **Finish** Powder Coated RAL 7016
- **Power** PV Panels Wattage: Solar Post 100 54w
- **Battery** 12v 10Ah
- **Lighting** LED 3w 300lm
- **Light** Colour 6000k Cool White or 2700k Warm White
Activation Remote control activation
- **Light Levels** Dim or brighten to required levels from off to 100%
- **Timing** 4, 6, 8 hours then off

solar post 200.

The solar post 200 is a 2metre high solar powered post designed for both commercial and residential use, offering the very latest cutting edge solar technology backed up with the highest quality engineering

the solar posts are ideal for parks, roads, campuses, drives, paths, housing developments and public spaces. Produced in stainless steel and powder coated the PV panels on 3 sides have enough PV wattage for the product to operate in any climate. Using a remote control on site the solar post can be set to different light levels and timings of 4 6 or 8 hrs enabling the post to operate at different settings depending on the season.

Please contact us for availability, pricing and any custom requirements for this product



Specifications

WYL1802A

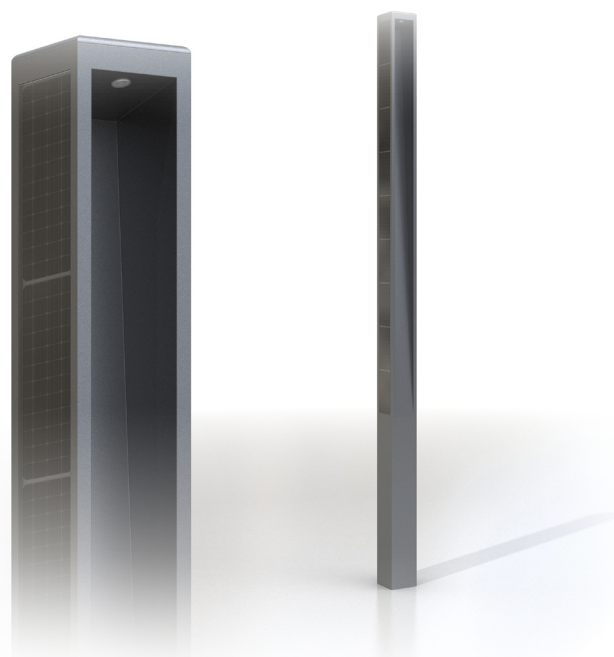
- **Dimensions** L 15cm W 15cm H 200cm
- **Material** Stainless Steel
- **Finish** Powder Coated RAL 7016
- **Power** PV Panels Wattage: Solar Post 200 54w
- **Battery** 12v 10Ah
- **Lighting** LED 3w 300lm
- **Light** Colour 6000k Cool White or 2700k Warm White
Activation Remote control activation
- **Light Levels** Dim or brighten to required levels from off to 100%
- **Timing** 4, 6, 8 hours then off

solar post 300.

The solar post 300 is a 3metre high solar powered post designed for both commercial and residential use, offering the very latest cutting edge solar technology backed up with the highest quality engineering

the solar posts are ideal for parks, roads, campuses, drives, paths, housing developments and public spaces. Produced in stainless steel and powder coated the PV panels on 3 sides have enough PV wattage for the product to operate in any climate. Using a remote control on site the solar post can be set to different light levels and timings of 4 6 or 8 hrs enabling the post to operate at different settings depending on the season.

Please contact us for availability, pricing and any custom requirements for this product



Specifications

WYL1802B

- **Dimensions** L 15cm W 15cm H 300cm
- **Material** Stainless Steel
- **Finish** Powder Coated RAL 7016
- **Power** PV Panels Wattage: Solar Post 300 54w
- **Battery** 12v 10Ah
- **Lighting** LED 3w 300lm
- **Light** Colour 6000k Cool White or 2700k Warm White
Activation Remote control activation
- **Light Levels** Dim or brighten to required levels from off to 100%
- **Timing** 4, 6, 8 hours then off

solar eye.

Solar powered lighting that gently illuminates and outlines cycle paths and footpaths.

- REDUCED INSTALLATION & OPERATIONAL COSTS
- WAYFINDING LIGHT
- TESTED & RELIABLE
- EXTREMELY TOUGH
- LFP BATTERY
- VISIBILITY
- CE ACCREDITATION
- CONSERVATION FRIENDLY

Please contact us for availability, pricing and any custom requirements for this product



Specifications

• Material	High impact durable engineering grade polymer
• Light source	LED (100,000 hrs life)
• Battery	Long life LFP battery (8 years+ anticipated)
• Working temperature	-20°C to +70°C
• Body dimensions	100mm (lip) and 80mm body
• Installed height	6mm nominal
• Milling depth	30mm
• Weight	275g
• Fixing adhesive	2 component moisture tolerant epoxy
• Working time	Full charge Flashing red 300hrs+, white steady 200hrs+
• Flash rate	1 sec on, 1 sec off
• Waterproof quality	IP68
• Impact rating	1K10
• Accreditation	CE accredited
• Visibility	High - up to 500m
• Light sensor	Auto on/off

solar boom.

High quality solar powered overhead light unit providing customised light settings for different climates.

Sensor system with bright up on approach. Providing zero energy costs and zero co2 emissions

Please contact us for availability, pricing and any custom requirements for this product



Features

- Sizes 300mm wide / 600mm wide / 1200mm wide
- Extruded aluminium Dark grey anodised
- Solar charging plus DC
- IP65
- Working temp -25c to +65c
- Sensor operated
- Brightness low light 25% full 100%
- Remote control activation
4 hours then off | 6 hours then off | 8 hours then off

Specifications

- Beam angle 20 degrees
- Light colour 6000k
- Lumens - 100 lm per watt
300mm wide 500lm | 600mm wide 1000lm | 1200mm wide 2000lm
- PV panel
300mm : 5w | 600mm: 10w | 1200mm: 20w
- LED - 50,000 hours life
300mm wide 5w | 600mm wide 10w | 1200mm wide 20w
- Li-on battery - 3-5 year life
300mm: 3,7v/ 8800Ah | 600mm: 3.7v/ 17600Ah | 1200mm: 3.7v/ 35200Ah

solar case.

The Solar Case is a solar powered illuminated LED case.

Built as an exterior cabinet it provides a stylish, practical and efficient way to display information throughout the day and night in this high grade display cabinet.

Essentially it is an outdoor notice board in a robust case that will last for years.

Please contact us for availability, pricing and any custom requirements for this product



Specifications

- LED illumination
- Light colour 6000k
- Pv panel wattage
- 300mm 5w
- 600mm 10w
- 1200mm 20w
- Beam angle 20 degrees
- Lumens
- 300mm 500lm | 600mm 1000lm | 1200mm 2000lm
- Lion battery 3.7v all sizes

Lighting - Solar Boom

- 3 Standard sizes 300mm/600mm/1200mm
- Dark grey anodised
- Zero energy costs
- CO2 neutral
- 5 yr battery life
- DC charging option
- Simple installation - (no hard wiring)
- Sensor systems - 25% brightness and 100% brightness on approach
- Remote control activation 4/6/8 hrs then off
- Operating temp -25C to +65C
- Weatherproof IP65

solar shelter.

A stunning new design incorporating a solar shelter that can be used at bus stops, train stations, terminals and campuses.

Fabricated from stainless steel and powder coated to any colour the solar shelter has toughened glass panels and includes LED lighting, LED poster cases and a smart bench to provide wireless and USB charging.

The bench also provides a built in 4G international router

Available in widths of 3 or 4 meters the smart shelter provides the very latest cutting edge technology all powered by a 420 watt solar panel built into the roof.



Specifications

WYS1816

- **Dimensions** 4000mm H x 1100mm W x 2220mm D
- **Material** Stainless Steel #201 Tempered Glass + WPC wood
- **Solar Panel** Monocrystalline Silicon, 420W
- **Controller** MPPT
- **Battery Type** Gel battery
- **Battery Capacity** 12V/200AH
- **USB Charger** 2
- **Led Light** LED Strip light inside, working with sensor
- **Advertising Display** 1 LED light box*2 window
- **Bluetooth speaker** 5/12V
- **WIFI router** 4G / International router
- **LED screen** P6 full colour, 800*384mm, 2pcs

solar canopy.

A stunning new design incorporating a solar canopy, table and benches.

Complete with USB and wireless charging, LED ambient lighting, 4G internet and Bluetooth speakers.

Please contact us for availability, pricing and any custom requirements for this product



Specifications

WYC1812

• Material	Stainless Steel #201 + WPC Wood
• Dimensions	Length 230cm Width 140cm Height 237cm
• Solar Panel	200W
• Battery Capacity	12V, 110AH
• Controller Type	MPPT
• Weight	Estimated 200kg
• DC- AC Converter	Optional
• USB Charger	2
• Wireless Charger	2
• Ambient Light	LED Spot Lights
• Bluetooth Speaker	5/12V
• Wi-fi	4G / International router

solar **wall mars.**

The solar wall mars is an ideal lighting solution for residential and commercial properties.

Mars has a choice of settings using a sensor system giving the option of all night illumination on low light or just bright up on approach.

Easy to install and competitively priced with warranty support.

Please contact us for availability, pricing and any custom requirements for this product



Technical Details

- Led 10 w 1000lm (full brightness)
- Battery 3.6v 2000mAh
- Light colour 4000k
- Pir sensor 5-10m
- IP65 weatherproof
- Warranty 1yr

Settings

- 1. 0lm - pir 1000lm 10 secs
- 2. 20lm - pir 1000lm 10 secs
- 3. 20lm dusk to dawn